

LINEA RESEARCH 44 SERIES M20

XY SERIES PRESET LOADING PROCEDURE

- 1) ESTABLISH ETHERNET CONNECTION BETWEEN COMPUTER AND AMPLIFIER
 - 2) START SYSTEM ENGINEER PROGRAM
 - 3) SELECT "ONLINE"
- DOUBLE CLICK ON DEVICE ONCE IT COMES ONLINE TO OPEN DEVICE PANEL



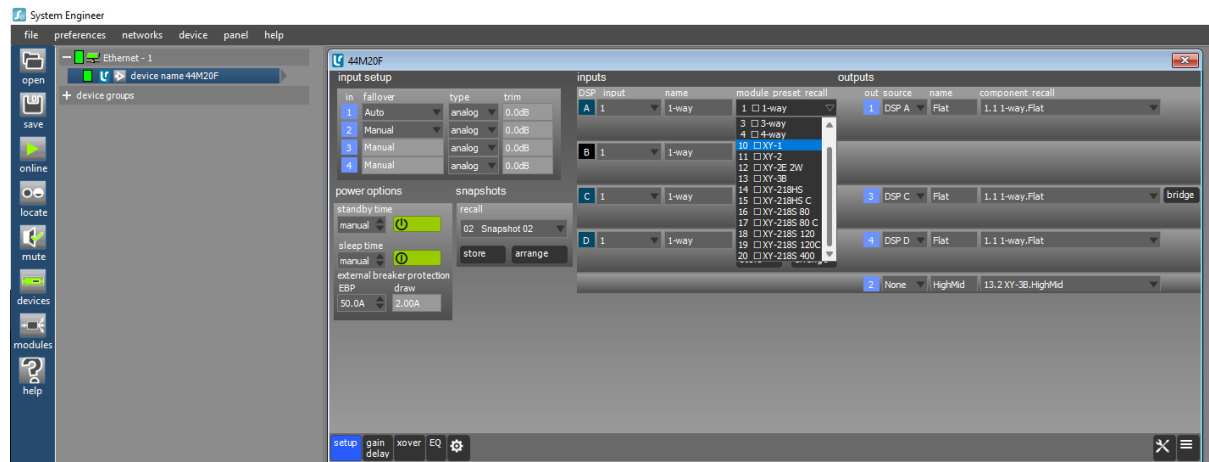
- 4) SELECT "LOAD FACTORY SETTINGS" FROM "FILE" DROP DOWN MENU



SELECT THE FILE: "PIONEER XY PRESETS V1.0 RELEASE.dfa"

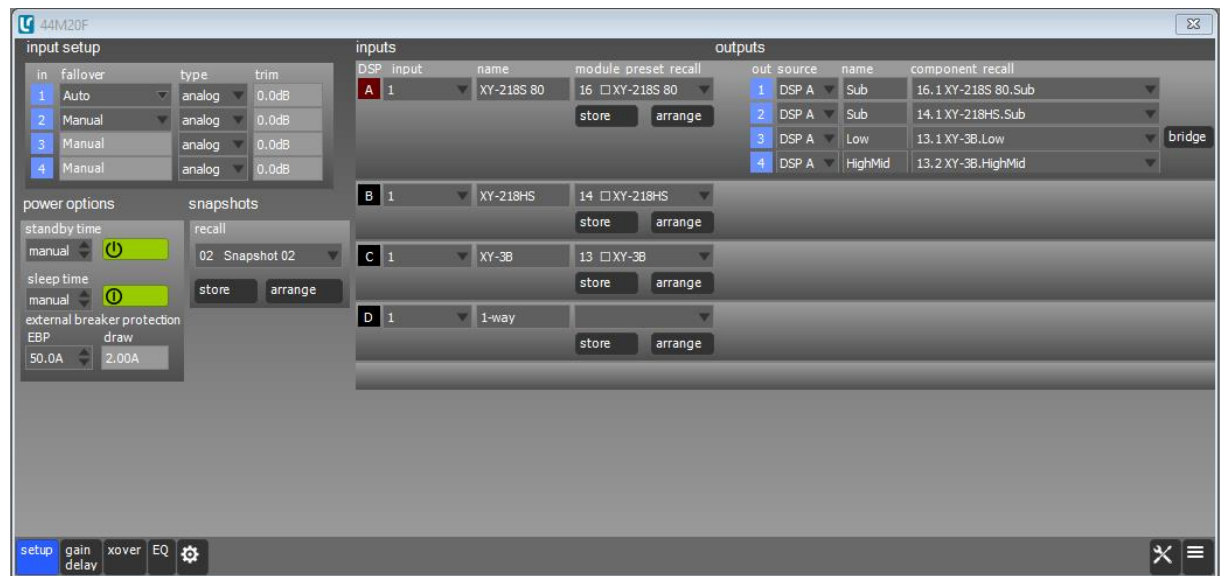
- 5) SELECT “SETUP” ON DEVICE PANEL THEN SELECT “MODULE PRESET RECALL”

XY SERIES FACTORY PRESET MODULES ARE STORED IN MEMORY LOCATIONS 10-20



- 6) LOAD XY SERIES PRESET MODULES INTO OUTPUT CHANNELS THAT ARE APPROPRIATE FOR YOUR CABINET CONFIGURATION AND CABLING. SELECT DSP INPUT PROCESSING AND INPUT ROUTING AS DESIRED.

EXAMPLE: OUTPUT 1 = XY-218S 80 (DSP A, INPUT 1)
 OUTPUT 2 = XY-218HS (DSP A, INPUT 1)
 OUTPUT 3 = XY-3B LOW (DSP A, INPUT 1)
 OUTPUT 4 = XY-3B MIDHIGH (DSP A, INPUT 1)



INPUT PROCESSING PARAMETERS ARE UNLOCKED AND AVAILABLE FOR SYSTEM TUNING

MODULE PROCESSING PARAMETERS ARE OEM FACTORY PROTECTED EXCEPT FOR INPUT SOURCE, GAIN AND DELAY (NOTE: BE CAREFUL TO MAINTAIN RELATIVE DELAYS BETWEEN XY-1, XY-2, XY-2E, XY-3B LOW AND MIDHIGH SECTIONS IF IT IS NECESSARY TO ADJUST THESE DELAYS)

LINEA RESEARCH 44 SERIES M20 XY SERIES FACTORY PRESETS

FILENAME = PIONEER XY PRESETS V1.0 RELEASE.DFA

PRESET	NAME	TYPE	PRE-DELAYS	DESCRIPTION	NOTES
10	XY-1	1W	0	OPERATING RANGE (45 - 400 Hz) = SAME AS XY-3B LF	PRE-ALIGNED FOR USE WITH XY-218S OR XY-218HS
11	XY-2	1W	0.313	OPERATING RANGE (235 - 20k Hz) = SAME AS XY-3B MH	PRE-ALIGNED FOR USE WITH XY-1 + XY-218S OR XY-218HS
12	XY-2E 2W	2W	0 / .188	BIAMP OPERATION (235 - 20k Hz / 2.5 kHz effective crossover)	PRE-ALIGNED FOR USE WITH XY-1 + XY-218S OR XY-218HS
13	XY-3B	2W	0 / 0.313 msec	BIAMP 3-WAY OPERATION (45 - 20k Hz)	PRE-ALIGNED FOR USE WITH XY-218S OR XY-218HS
14	XY-218HS	1W	1.354	48 - 120 Hz	FRONT-FIRING SUBWOOFER PRESET
15	XY-218HS C	1W	5.394	CARDIOID REAR FIRING 48 - 120 Hz	REAR-FIRING PARAMETERS FOR 2 FRONT-FIRING : 1 REAR-FIRING CONFIG
16	XY-218S 80	1W	1.17	30 - 80 Hz	FRONT-FIRING SUBWOOFER PRESET
17	XY-218S 80 C	1W	5.05	CARDIOID REAR FIRING 30 - 80 Hz	REAR-FIRING PARAMETERS FOR 2 FRONT-FIRING : 1 REAR-FIRING CONFIG
18	XY-218S 120	1W	4.064	30 - 120 Hz	FRONT-FIRING SUBWOOFER PRESET
19	XY-218S 120C	1W	7.954	CARDIOID REAR FIRING 30 - 120 Hz	REAR-FIRING PARAMETERS FOR 2 FRONT-FIRING : 1 REAR-FIRING CONFIG
20	XY-218S 400	1W	0.313	30 - 400 Hz (FOR USE WITH XY-2 WITHOUT XY-1)	EXTENDED XY-218S OPERATING RANGE FOR DJ MONITOR USE